

NORTH FORK PAYETTE RIVER WATERSHED COALITION WORK GROUP:



Stormwater Management



Stormwater Best Management Practices (BMPs)

KEY CONCERN OF GROUP

1. BMP IMPLEMENTATION
2. POLLUTION DISCHARGE

NEXT STEPS

1. INSPIRE DECISION-MAKERS
2. OBTAIN FUNDING

CONTACT INFORMATION

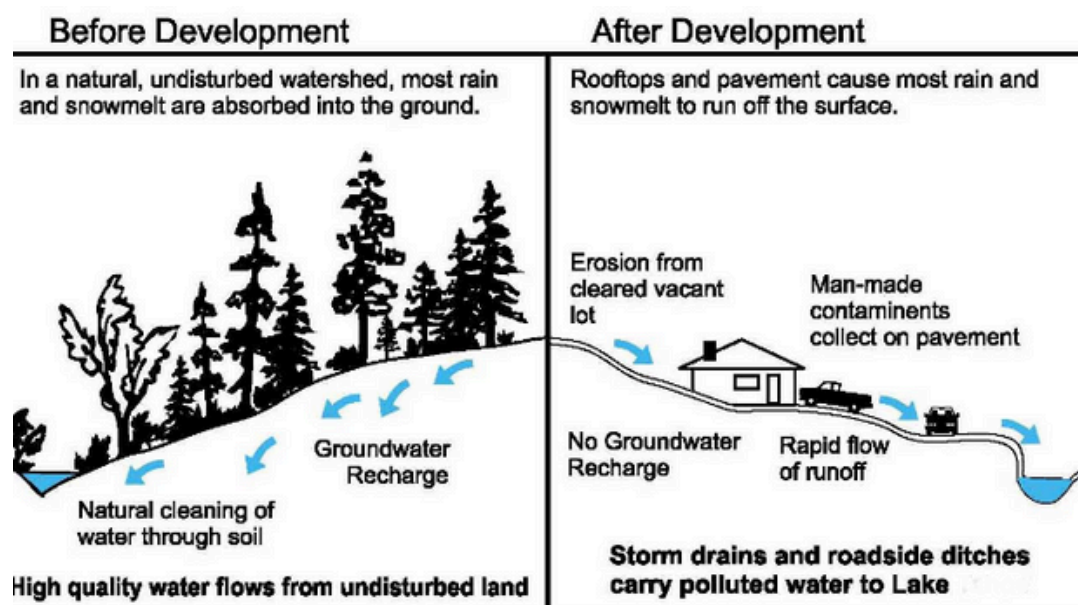
Team Lead Information:
Lenard Long
lenard.long@gmail.com

North Fork Payette River Watershed Coalition

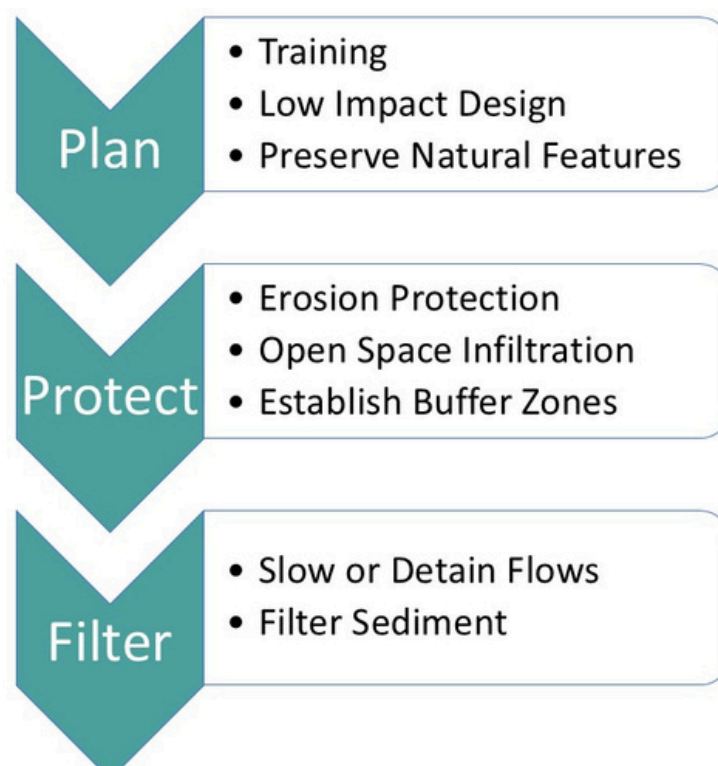
NFPayette@outlook.com
Valleyswcd.org
durena.farr@id.nacdnet.net
(208) 382-3317

TOP PRIORITIES

- CONTINUOUS IMPROVEMENT.
- TRAINING CONTRACTORS AND AGENCY PERSONNEL TO INSTALL STORMWATER BMPs.
- IMPLEMENT POLLUTION PREVENTION BMP LINE OF DEFENCE.
- IMPLEMENTATION OF AGRICULTURE BMPs.
- BMP MAINTENANCE.



BMPs TO THE DEFENSE



NORTH FORK PAYETTE RIVER WATERSHED COALITION WORK GROUP:



Stormwater Management



IDEAL OUTCOME:

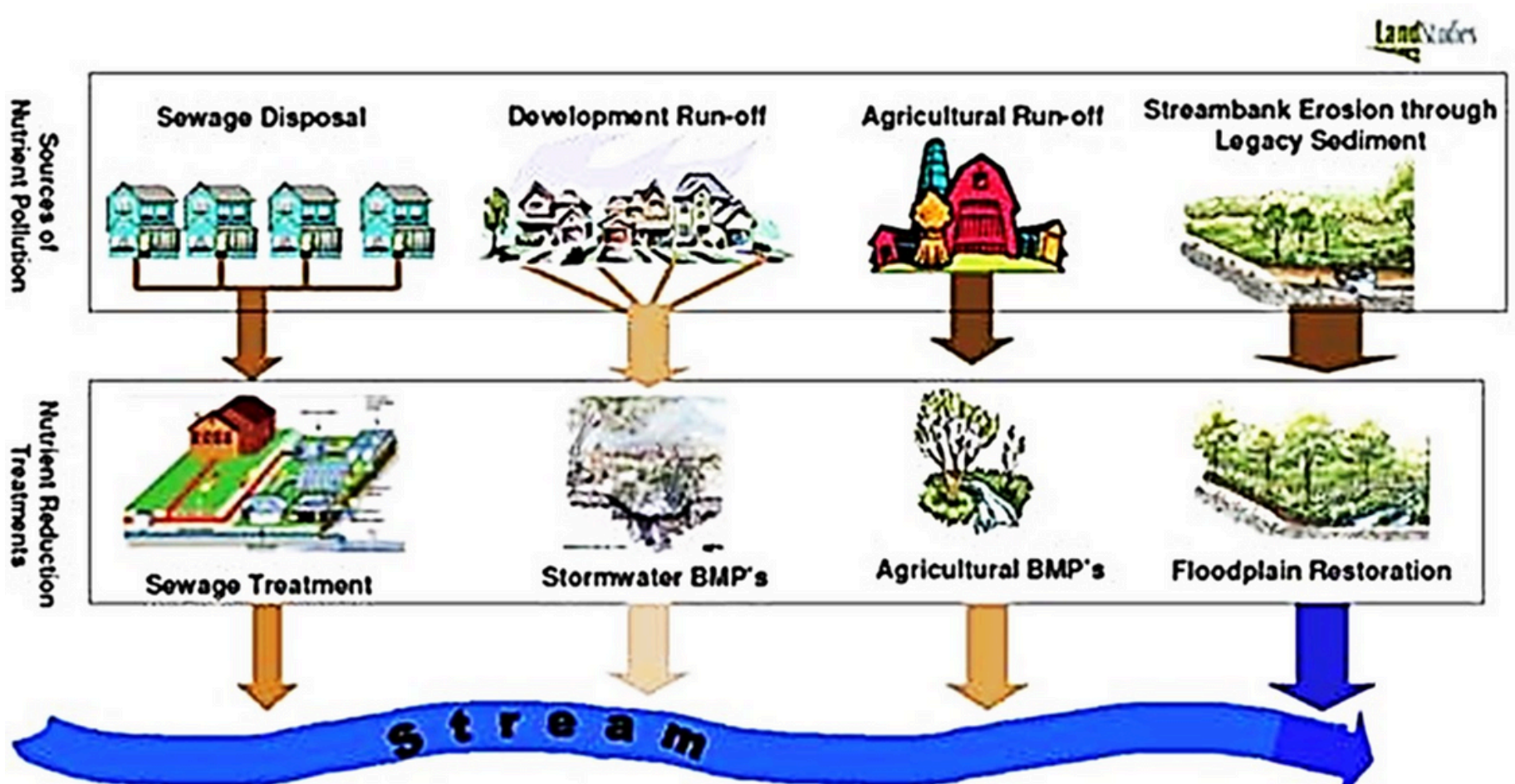
Healthy watershed, healthy land, healthy life, for generations to come.

TOP PRIORITY: CONTINUOUS IMPROVEMENT

- Implementation and verification of recommended BMPs:
 - IDEQ in the 2000 Implementation Plan
 - Priority Strategies in the VC Waterways Management Plan

ACTION ITEMS:

- DESIGNATE A TRAINED COUNTY STORMWATER MANAGER.
- ESTABLISH TRAINING PROGRAMS IN STORMWATER BEST MANAGEMENT PRACTICES (BMPs).
- RECOGNIZE THOSE CONTRACTORS & LANDOWNERS WHO EXCEL IN BMP IMPLEMENTATION.



NORTH FORK PAYETTE RIVER WATERSHED COALITION WORK GROUP:



Stormwater Management



IDEAL OUTCOME:

Contractors and agency personnel automatically install stormwater BMPs as part of a typical project.

TOP PRIORITY: EDUCATION + STATUTES

- Contractor Training
- U of I Extension to host a SEEP training in the Spring of 2025.
- Strengthen County Stormwater Codes for lots less than 1 acre and working within 300 feet of a waterway.

ACTION ITEMS:

- DEVELOP A CHECKLIST FOR CONTRACTORS AND LANDOWNERS.
- UPDATE THE COUNTY BMP HANDOUT BOOKLET.
- REQUIRE PRE-CONSTRUCTION SITE MEETING.
- REQUIRE STORMWATER AND EROSION EDUCATION PROGRAM (SEEP) OR EQUIVALENT TRAINING

IDEAL OUTCOME:

A 'source to bloom' approach. Nutrient runoff corrective measures at or near sources BEFORE entering waterways.

TOP PRIORITY: MANAGE SOURCE ISSUES

- Integrating stormwater management into the initial site design process.
- Preserving and utilizing existing natural infiltration features and systems.
- Managing stormwater as close to the source as possible.
- BMP implementation, inspections, and maintenance.

ACTION ITEMS:

- MINIMUM 80% TSS REMOVAL.
- DEVELOP A PHOSPHORUS OFFSET POLICY AND FEE STRUCTURE FOR NON-COMPLIANCE.

NORTH FORK PAYETTE RIVER WATERSHED COALITION WORK GROUP:



Stormwater Management



ACTION ITEMS:

- PRESCRIBED GRAZING SYSTEMS EDUCATION.
- IRRIGATION NUTRIENT RUNOFF CAPTURE/REUSE.
- RIPARIAN MANAGEMENT WITH ALTERNATIVE WATER AND VIRTUAL FENCING.
- CONSTRUCTED WETLAND FILTERS.

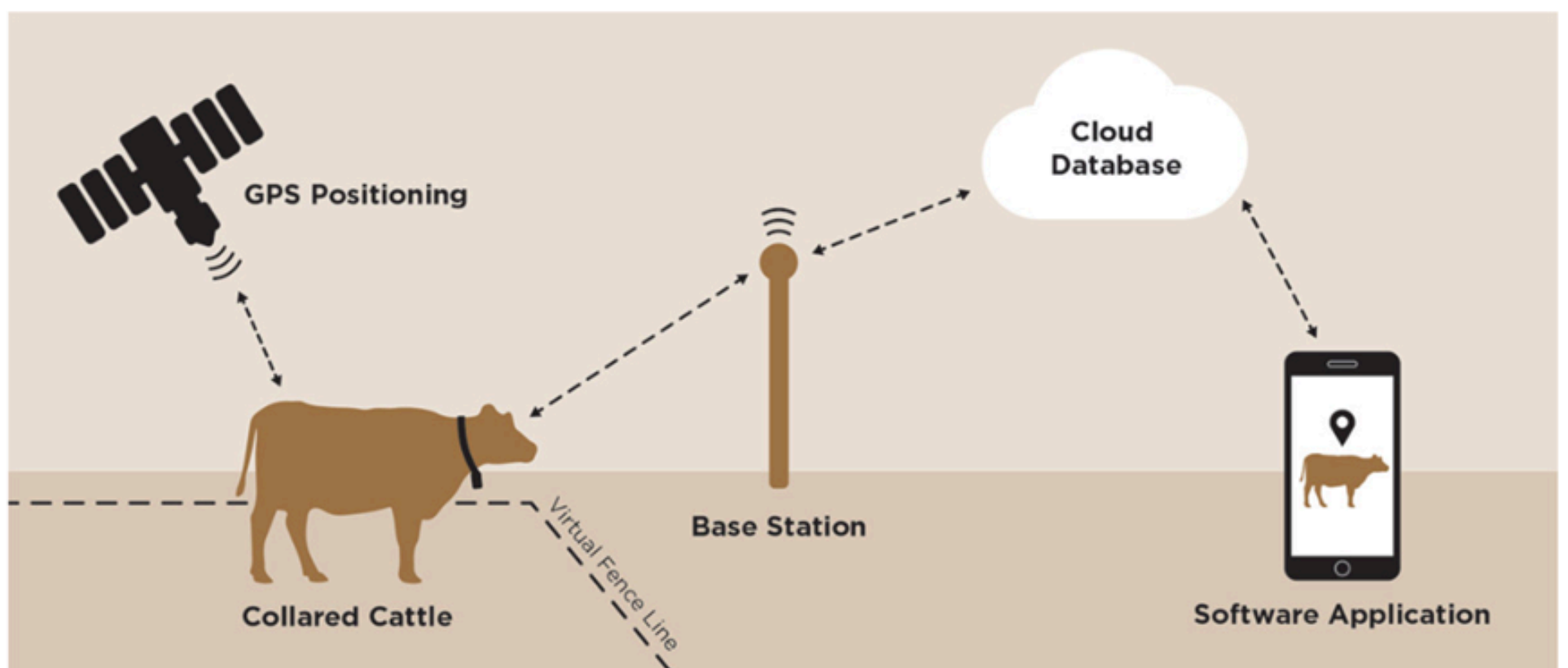
IDEAL OUTCOME:

Implementation of Agriculture BMPs per NRCS, DEQ 2000 Implementation Plan, and Priority Strategies outlined in the VC Waterway Management Plan

TOP PRIORITY: AGRICULTURAL BMP

- Tier 1 - All lands within 150 feet of either side of a waterway.
- Tier 2 - Lowlands, mostly irrigated crops and pasture.

EMERGING TECHNOLOGY; VIRTUAL FENCING FOR RIPARIAN MANAGEMENT



NORTH FORK PAYETTE RIVER WATERSHED COALITION WORK GROUP:



Stormwater Management



RESOURCES

<https://www.epa.gov/npdes/npdes-stormwater-program>

BMP References:

- <https://www.epa.gov/npdes/stormwater-discharges-construction-activities>
- <https://www.co.valley.id.us/media/Departments/PlanningZoning/Stormwater.pdf>
- <https://www.deq.idaho.gov/permits/water-quality-permits-certifications/storm-water-permits/>

Helping You
Fulfill Your
Regulatory
Obligations

Stormwater Pollution Prevention Plan

